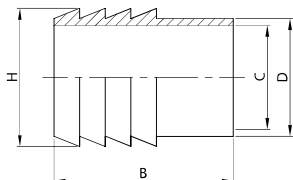




ATT. PORTAGOMMA EL.
HOSE CONNECTION PE.
MANCHON À LIGATURER
MANGUITO MANGUERA EL.

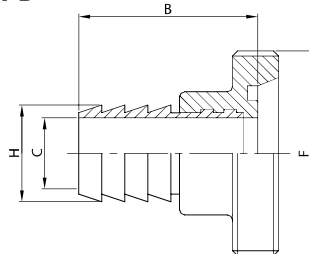
140 L



DN	B	C	D	H	gr
28	42,0	25,0	28,0	34,0	80
34	45,0	31,0	34,0	40,0	105
40	52,0	37,0	40,0	46,0	145
52	59,0	49,0	52,0	58,0	210
70	72,0	66,0	70,0	76,0	380
85	73,0	81,0	85,0	93,0	570
101	95,0	97,6	101,6	114,0	1.400

ATT. PORTAG. + BF. MT.
HOSE CONNECTION + MP. ED.
NEZ FILETÉ À LIGATURER
M. M. MACHO MD.

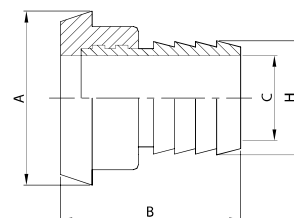
141 D



DN	B	C	F	H	gr
25	49,0	25,0	52-6	34,0	212
32	52,0	31,0	58-6	40,0	275
40	58,0	37,0	65-6	46,0	355
50	65,0	49,0	78-6	58,0	490
65	79,0	66,0	95-6	76,0	760
80	82,0	81,0	110-4	93,0	1.170
100	104,0	97,6	130-4	114,0	2.400

ATT. PORTAG. + BC. MT.
HOSE CONNECTION + TP. ED.
DOUILLE À LIGATURER
M. M. CASQUILLO MD.

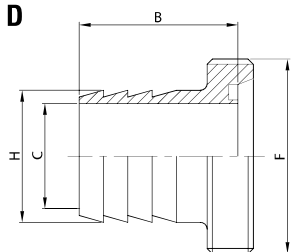
142 D



DN	A	B	C	H	gr
25	44,0	49,0	25,0	34,0	165
32	50,0	52,0	31,0	40,0	215
40	56,0	58,0	37,0	46,0	280
50	68,0	65,0	49,0	58,0	410
65	86,0	79,0	66,0	76,0	675
80	100,0	82,0	81,0	93,0	950
100	121,0	104,0	97,6	114,0	2.180

PORTAGOMMA EF.
HOSE CONNECTION ME.
PORTE C. NEZ FILETÉ
M. M. MACHO SR.

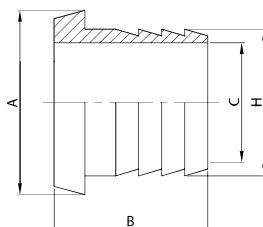
143 D



DN	B	C	F	H	gr
10	38,0	10,0	28-8	18,0	80
15	38,0	16,0	34-8	24,0	115
20	38,0	20,0	44-6	30,0	180
25	37,0	25,0	52-6	34,0	212
32	37,0	31,0	58-6	40,0	275
40	42,0	37,0	65-6	46,0	355
50	47,0	49,0	78-6	58,0	490
65	58,0	66,0	95-6	76,0	760
80	62,0	81,0	110-4	93,0	1.170
100	77,0	97,6	130-4	114,0	2.400

PORTAGOMMA EC.
HOSE CONNECTION TE.
PORTE C. DOUILLE
M. M. CASQUILLO SR.

144 D



DN	A	B	C	H	gr
10	22,0	36,0	10,0	18,0	65
15	28,0	36,0	16,0	24,0	90
20	36,0	38,0	20,0	30,0	140
25	44,0	40,0	25,0	34,0	165
32	50,0	40,0	31,0	40,0	215
40	56,0	45,0	37,0	46,0	280
50	68,0	51,0	49,0	58,0	410
65	86,0	62,0	66,0	76,0	675
80	100,0	62,0	81,0	93,0	950
100	121,0	80,0	97,6	114,0	2.180